

# Lacy Links

By TrendSetter Iulia Postica

Copyright 2017 © Starman, Inc. & Artist. Not licensed for digital distribution.  
Promotional use only—no resale of instructions permitted. Version 1.0

## BEAD LACE WITH DEMI ROUNDS AND CZECHMATES® CRESCENTS

Whether you choose to make a narrow or wide bracelet, this lacy mix of CzechMates® Crescents and Demi Rounds is quick and fun to bead.

### ABOUT THE ARTIST: IULIA POSTIC

Passionate for Beadwork, Designer and Owner at BeadedTreasury



I've been crocheting and knitting ever since I remember and loved learning these skills from my grandmother. My passion is for beadwork and jewelry making. I adore beads and everything I can create with them; all the variety of bead shapes and colors inspire me. I currently focus on making beading patterns to share with all bead lovers.

Visit [www.BeadedTreasury.com](http://www.BeadedTreasury.com)

**COLORWAYS**—Olive: CzechMates Crescents Ultra Luster - Opaque Green (391-310-P65455); TOHO Demi Rounds 11° Gold-Lined Rainbow Crystal (TN-11-994); TOHO Demi Rounds 8° Matte-Color Dk Olive (TN-08-617). Purple: CzechMates Crescents Pacifica - Elderberry (391-310-PS1003); TOHO Demi Rounds 11° Transparent-Rainbow-Frosted Crystal (TN-11-161F); TOHO Demi Rounds 8° Gold-Lustered Hydrangea (TN-08-206).



## INSTRUCTIONS

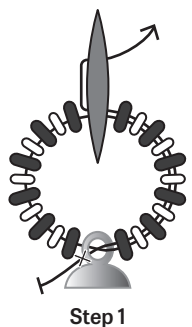
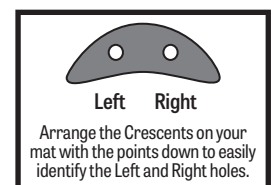
**Note:** For a narrow bracelet, create only the Base Row in Steps 1–3. For a wider bracelet, work Steps 1–5.

- 1. Base Row:** On 2yd of thread, add one half of the clasp. Add DR8, DR11; repeat four times. Add DR8, CC-Left, DR8. Add DR11, DR8; repeat four times. Form a ring and tie a knot against the tail. Pass through all beads and clasp again (not shown), then weave through to exit the CC and jump to its second hole. Tie off the tail thread.
2. Repeat Step 1 fourteen times, this time connecting each new segment to the open hole of the previous unit's CC.
3. Add DR8, DR11; repeat four times. Add DR8, the second half of the clasp, DR8. Add DR11, DR8; repeat four times. Pass through the last CC exited and all beads again (not shown), then weave through to exit the tenth DR8 added in this step. Note: For a narrow bracelet, skip the following steps and tie off.
4. **Outer Rows (optional):** Rotate the beadwork clockwise 90 degrees. Add DR8, DR11; repeat three times. Add DR8, pass through the center DR8, DR11, DR8 of the next unit. Repeat this step fourteen times down the length of the band.

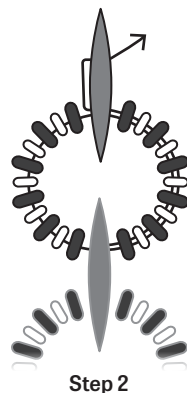
## MATERIALS

15 CzechMates® Crescents (CC)  
2g TOHO 11° Demi Rounds (DR11)  
5g TOHO 8° Demi Rounds (DR8)  
TOHO One-G Thread  
Clasp of Choice

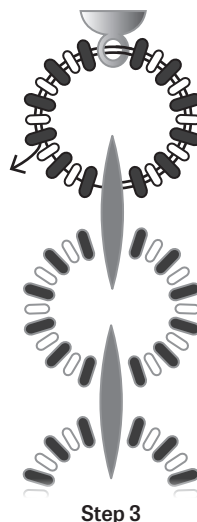
Bracelet as instructed measures approx.  
6 3/4" before clasp. Each additional segment adds  
approx. 1/2".



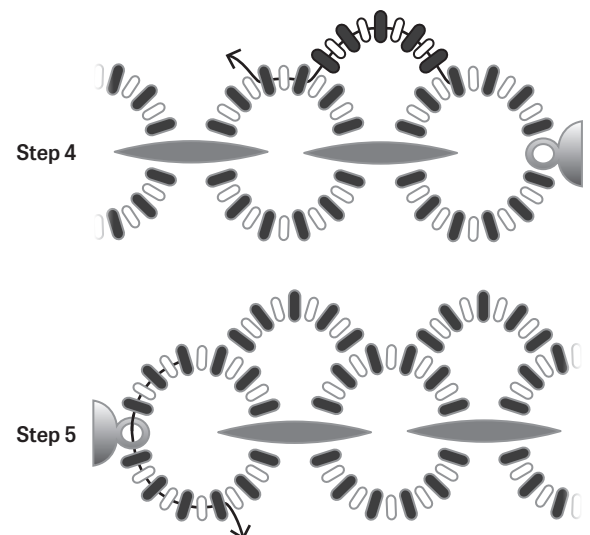
Step 1



Step 2



Step 3



Step 4

Step 5